

6th European Transoesophageal Echocardiography Course on Congenital Heart Disease

London, 19-20 March 2020

NHS

Great Ormond Street
Hospital for Children
NHS Foundation Trust

UCL

GREAT ORMOND STREET
INSTITUTE OF CHILD HEALTH

What is this course about?

This is the sixth dedicated course on transoesophageal echocardiography (TOE) on congenital heart disease providing the participant with the essential theoretical basics, morphological aspects of common lesions in congenital heart disease as well as practical aspects of TOE in children and adults with congenital heart disease. The two-day course will provide hands-on TOE simulator experience with particular focus on congenital lesions frequently encountered in clinical practice. All practical sessions will be directly supervised by experienced TOE operators in this field. Participants will have opportunities to discuss challenging cases with instructors individually. This course is an ideal complementation to the popular "European Echocardiography Course on Congenital Heart Disease". For more information and online registration go to www.echocardiography-course.com.

What will you learn?

- By the end of this course participants will have a good understanding of the physics involved in transoesophageal echocardiography (TOE) and understand indications and limitations of TOE in children and adults with congenital heart disease
- Side-by-side comparison of cardiac morphology and TOE will enable delegates to appreciate the complexity in congenital heart disease and how to apply this in clinical TOE practice.
- Delegates will gain an overview of current advances in TOE imaging modalities and new emerging roles for TOE in congenital heart disease.
- Participants will have learnt about the challenges in imaging complex patients through case-based discussions with experts in the field and will have gained further insight into TOE guided device closures of challenging cases with congenital heart disease.
- Delegates will gain confidence in operating TOE probes safely and succinctly under expert supervision using hands-on TOE simulator training sessions, which will prepare them for the clinical use of TOE in children and adults with congenital heart disease.

Who should attend?

This course is aimed at clinical staff working in the field of paediatric or adult congenital heart disease. Whether you are working in paediatric cardiology, cardiac theatres, interventional angiography suites, echocardiography laboratories or specialising in grown-up congenital heart disease this course will expand your knowledge, experience and refresh your TOE practice in patients with congenital heart disease.

Fees:

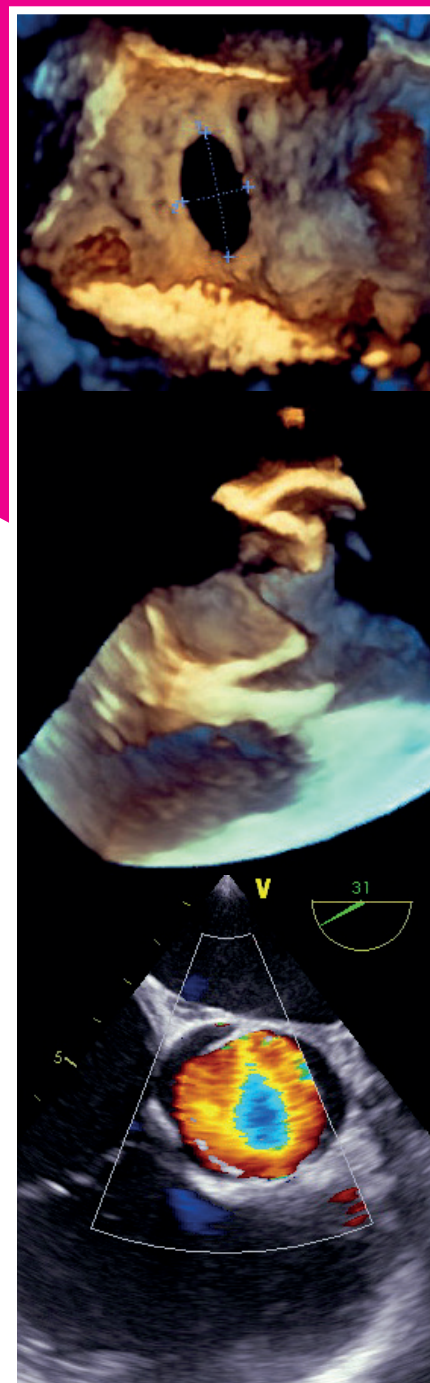
Early Bird:
£500 until 16/01/2020
Standard:
£570 from 17/01/2020

Course organisation:

Jan Marek & Beatrice Bonello (London)

Course directors:

Jan Marek (London)
Luc Mertens (Toronto)
Folkert Meijboom (Utrecht)



Accreditation from EBAC European Board for Accreditation in Cardiology has been applied for.

For further details visit www.ichevents.com or contact the ICH Events Office, telephone: +44 (0)20 7905 2699, email ich.events@ucl.ac.uk

6th European Transoesophageal Echocardiography Course on Congenital Heart Disease

DAY 1: Thursday 19 March 2020

- 08:30 – 09:00 *Registration & coffee*
- 09:00 – 09:10 Welcome and introduction
Jan Marek (London), Folkert Meijboom (Utrecht), Luc Mertens (Toronto)
- 09:10 – 09:40 Segmental approach to congenitally malformed hearts: inside cardiac structures from outside the body
Andrew Cook, London
- 09:40 – 10:00 Learning TOE on congenital heart disease: structured approach & training with quality improvement in mind
Beatrice Bonello, London
- 10:00 – 10:30 Advantages and limitations of TOE in patients with congenital heart disease
Luc Mertens, Toronto
- 10:30 – 11:00 Intraoperative TOE assessment of cardiac function in patients with congenital heart disease
Sue Wright, London
- 11:00 – 11:15 Discussion
- 11:15 – 11:45 *Coffee break*
- 11:45 – 12:15 Demonstration of cardiac morphology: ASD, VSD, and AVSD
Andrew Cook, London
- 12:15 – 12:45 TOE assessment of ASD and suitability for device closure
Wei Li, London
- 12:45 – 13:15 TOE assessment in VSD & AVSD
Jan Marek, London
- 13:15 – 13:45 TOE assessment of adults with congenital heart disease
Folkert Meijboom, Utrecht
- 13:45 – 14:00 Discussion
- 14:00 – 14:45 *Lunch break*
- 14:45 – 17:45 Workshops
TOE simulator training supervised by faculty Heartworks (5x simulator), Leipzig (1x simulator): GOSH team available for Q&A
- 18:00 – 20:00 *Evening reception*

DAY 2: Friday 20 March 2020

- 08:00 – 08:30 *Welcome with tea & coffee*
- 08:30 – 09:15 Demonstration of complex cardiac morphology with outflow tract obstruction and functionally univentricular heart
Andrew Cook, London
- 09:15 – 09:45 TOE assessment of left ventricular outflow tract obstruction
Jan Marek, London
- 09:45 – 10:15 TOE assessment of right outflow tract incl. complex congenital heart disease
Luc Mertens, Toronto
- 10:15 – 10:45 TOE assessment of patients following Fontan operation
Folkert Meijboom, Utrecht
- 10:45 – 11:00 Discussion
- 11:00 – 11:30 *Coffee & tea break*
- 11:30 – 13:00 'Expert tips & tricks': Panel of experts discussing challenging congenital heart disease TOE cases with delegates
Jan Marek/Folkert Meijboom/Luc Mertens
- 13:00 – 13:45 *Lunch break*
- 13:45 – 16:45 Workshops:
TOE simulator training supervised by faculty Heartworks (5x simulator), Leipzig (1x simulator): GOSH team available for Q&A
- 16:45 – 17:00 Course feedback & outlook for the future
Jan Marek/Folkert Meijboom/Luc Mertens