

# Vocational choice and experience of career entry: Only a problem for GUCH\* patients?

Elisabeth Sticker

Department of Developmental Psychology

University of Cologne

\* GUCH = Grown up with congenital heart disease



# Contents

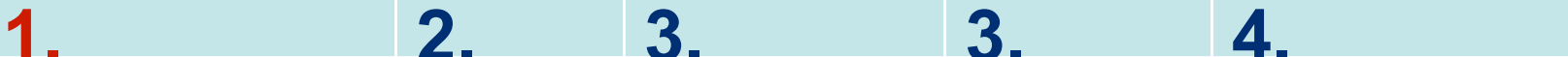
**1. Introduction**

**2. Issue**

**3. Methods**

**4. Results**

**5. Conclusion**



# 1. Introduction

Career entry is an essential step for the social position of individuals in the society retroacting to the self definition, because identity of adults is highly contingent on work.

(Faltermajer et al. 2002, p. 99, translated by E.S.)

GUCHES experienced a higher meaning of life



# Research results: educational level of CHD subjects

- Lower (van Rijen 2002, Kamphuis\* 2002)
- Equal (Nieminen 2003)
- Higher (Rixen 2002, Vigl\*\*, 2007)

\* For subjects with complex CHD

\*\* For subjects with minor or medium CHD



# Research results: vocation of CHD

## Objective data:

- Equal employment rate (Nieminen 2003, van Rijen 2003)
- Lower employment rate (Kamphuis\* 2002)
- Less frequent full time job (Loup 2009)

## Subjective Experiences:

- Poorer vocational adjustment (Lyon 2006)
- Restricted occupational choice (Crossland 2005, Zoege 2006)
- Less career chances because of health and mobility problems (Kamphuis\* 2002)

\* For subjects with complex CHD



## 2. Previous own studies

### 1. Nationwide inquiry in Germany 2008

- 17 open questions about experiences regarding kindergarten, school, vocational process
- Sample: 47 GUCHes
- problems esp. regarding career counseling, career entry

### 2. Qualitative personal inquiry (diploma thesis Anja Schier 2009)

- Sample: 27 GUCHes
- problems esp. when being physically restricted



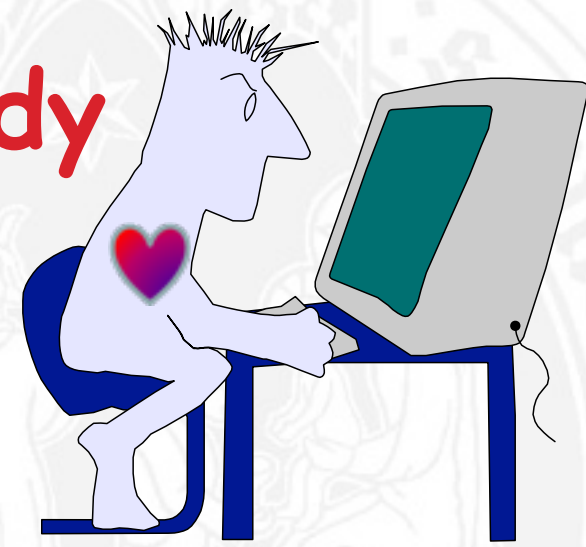
## 2. Issue

1. To what extent do GUCH\*es experience vocational problems?
2. Do such problems also exist

\* GUCH = Grown up with congenital heart disease



# 3. Methods of online study




- Software Limesurvey
- Open from May 15 till August 23, 2012
- Sample: GUCHes, 16 to 35 years
- Access via self-help groups, umbrella organizations, competence net CHD, clinic and polyclinic for pediatric cardiology of the University of Cologne
- 78 questions regarding 1) vocational choice, 2) vocational education, 3) studying, 4) career entry
- Precisely fitting assignment of questions to respective status of vocational process
- Peculiarity: self chosen peers as controls





# Sample - sex

	GUCHes without controls	GUCHes with control	Matched controls	Other controls
Female	57 / 61%	< 37 / 77%	35 / 73%	6 / 86%
Male	37 / 39%	11 / 23%	13 / 27%	1 / 14%
Sum	94 / 100%	48 / 100%	48 / 100%	7 / 100%
	142		55	
Summe	197			

 Significantly less G-C than G+C females  
 (=0.04, Fisher's exakt test)



# Sample - age

	GUCHes without controls (N=93)	GUCHes with controls (N=48)	Matched controls (n=48)
Mean	23,3	= 23,3	= 23,3
Minimum	15	16	16
Maximum	34	30	34
Standard deviation	4,2	4,2	4,6

→ Very good similarity



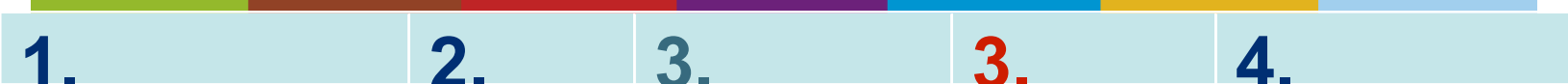
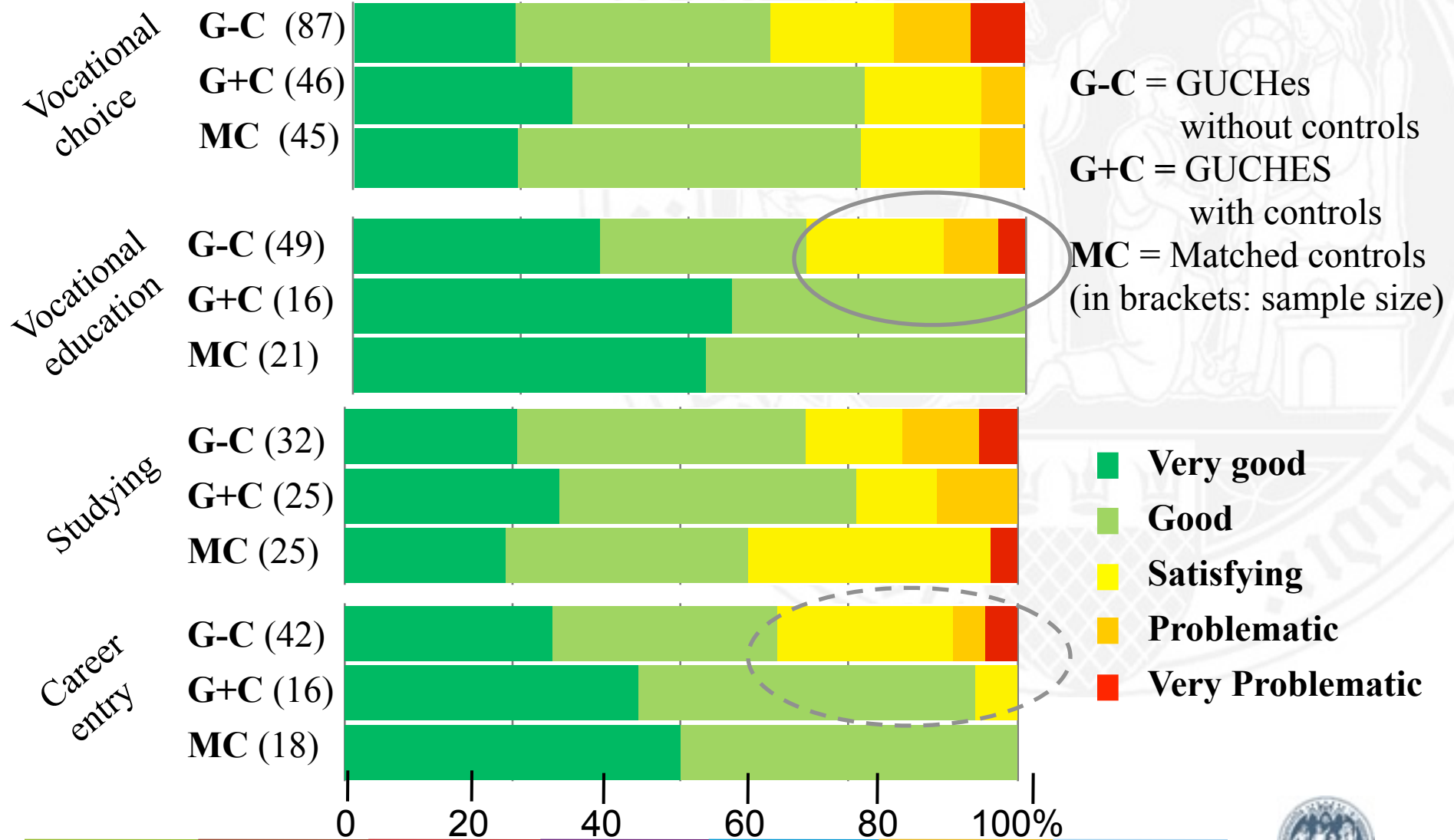
# Sample - educational level

	GUCHES without controls		GUCHES with controls		Matched controls MC (48)	
	N	%	N	%	N	%
Not graduated at all	1	1%	0	0%	0	0%
Not yet graduated	6	6%	1	2%	0	0%
Special needs school	2	2%	0	0%	0	0%
Secondary modern school	8	8%	0	0%	0	0%
Middle school	22	23%	8	17%	11	23%
Advanced technical certificate	19	20%	8	16%	9	18%
Abitur certificate	37	39%	30 <	63%	28 =	58%

◀ Significantly higher educational level for G+C compared to G-C, p=.003, U-Test



# How did you experience



# Overview. Experiencing different phases

Differences	Vocational choice	Vocational education	Studying	Career entry
Groups	None	G-C: sign. > than G+C	None	G-C: tend. > than G+C
Sex	None	None	None	None
Serious vs. mild p.o.r	G-C: sign. > G+C: sign. >	G-C: sign. >	G-C: tend. >	G-C: sign. >

## Abbreviations:

G-C = GUCHes without controls

G+C = GUCHES with controls

> more negative ratings    > more positive ratings

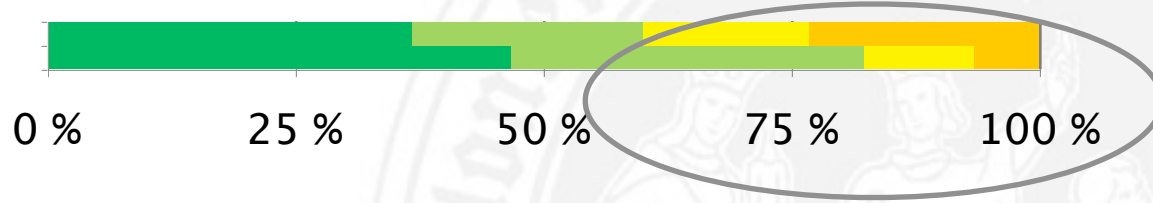
p.o.r. = postoperative results



# Role of heart defect in different vocational phases

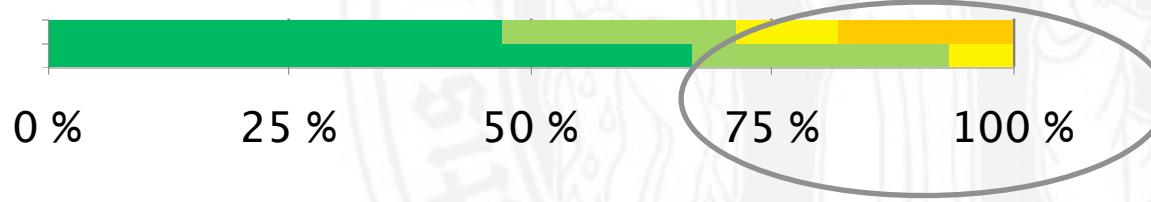
**a) Vocational choice** ( $p=.032$ , U-Test, Kendall's tau with severity of postoperative result:  $.22^*$ )

G-C (90)



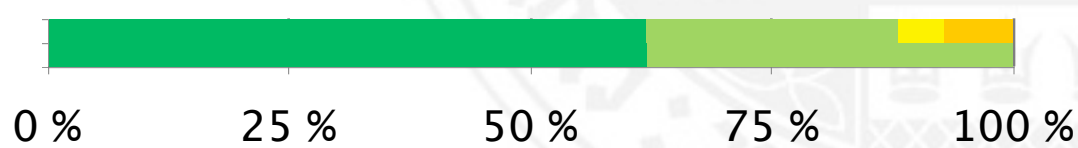
**b) Vocational education** ( $p=.021$ , U-Test, Kendall's tau with severity of postoperative result:  $.41^{**}$ )

G-C (66)



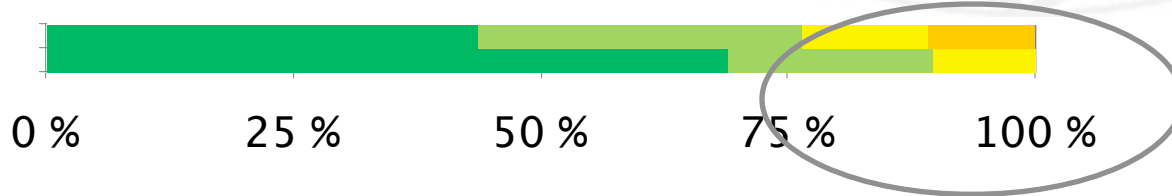
**c) Studying** (Kendall's tau with severity of postoperative result:  $.23^*$ )

G-C (42)



**d) Career entry** ( $p=.021$ , U-Test, Kendall's with severity of postoperative result:  $.21^*$ )

G-C (55)



# Conclusions

1. Altogether positive experience of process from vocational choice to career entry; but some GUCHes need advice.
2. Correlation between experiences and postoperative results.
3. Nearly no differences between matched pairs.
4. GUCHES without controls experience their vocational process less positive than those with controls.  
But also: less girls, poorer education level  
Why?  
Lack of integration? Poor social network?

